



Malvicino Design Group

Architectural Acoustics Noise & Vibration Control
 System Integration & Installation
 57 West 57th Street, 4th Floor
 New York, NY 10019
 www.malvicinodg.com
 Tel: +1 (646) 416-7940
 347.455.08.62
 info@malvicinodg.com

PROJECT: **ACOUSTIC PRODUCT LINE by MALVICINO DESIGN GROUP**

TECHNICAL SCHEMATICS

DESCRIPTION: **VAP-1 VARIABLE ACOUSTIC PANEL**

NOTES & COMMENTS:

SCHEMATIC TITLE: **VAP-1 VARIABLE ACOUSTIC PANEL**

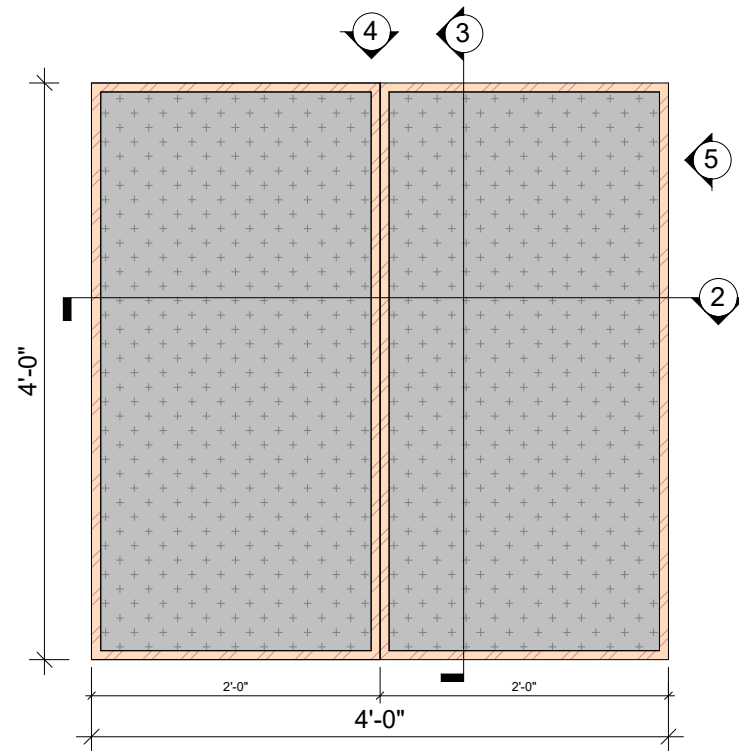
SCALE: 3/4" = 1'-0"
 DATE (D/M/Y): 02/14/24
 DRAWN BY: J.E.N.Q.
 CHECK BY: J.E.M.
 APPROVED BY: H.A.M.

PLAN No. **A-00.07**

VAP-1 VARIABLE ACOUSTIC PANEL

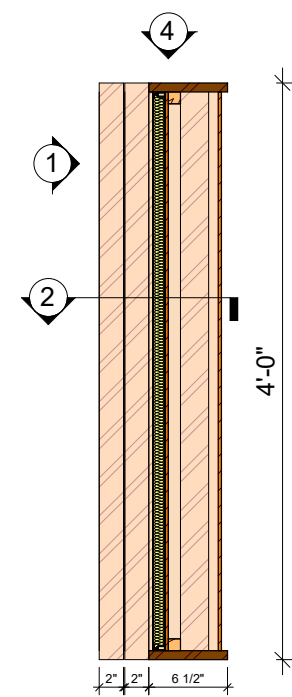
The VAP-1 is designed to provide variable acoustics for any live acoustic space, making it ideal for multi-use recording and rehearsal spaces where flexibility is crucial. The cabinet doors can be adjusted to modify reverb time, control flutter echoes, and address low-frequency modal issues. When closed, the panel blends direct and reflected sound to enhance intelligibility and musical clarity, while in the open position, it offers 2 inches of sound absorption.

Constructed from 3/4" MDF, the VAP-1 features wood veneers on the reflective/diffusive side and custom fabrics on the absorbent side, with options selected from industry-standard or custom fabrics. The VAP-1 cabinets come ready to hang with integrated cleats for easy installation. Available in dimensions of 4'-0" (width) x 4'-0" (length) x 10"/5" (depth). *All components are Class A Fire Rated, ensuring safety and compliance.*



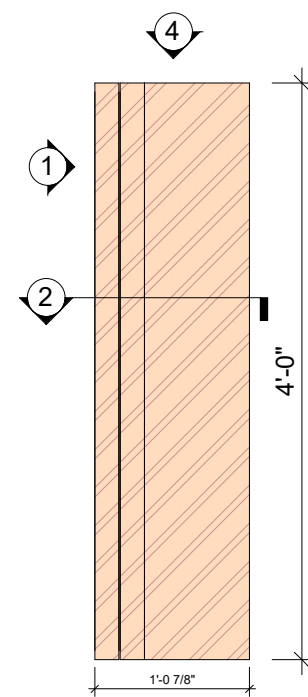
1 FRONT VIEW

3/4" = 1'-0"



3 SECTION-B

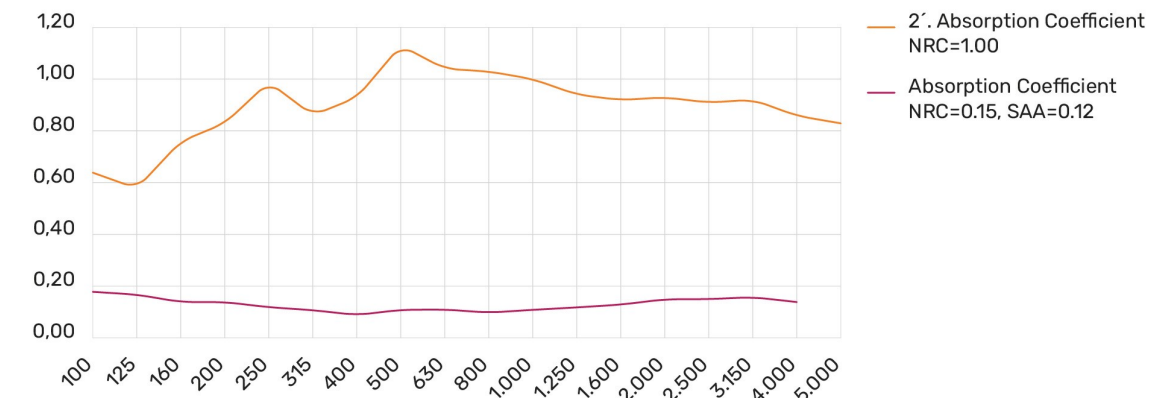
3/4" = 1'-0"



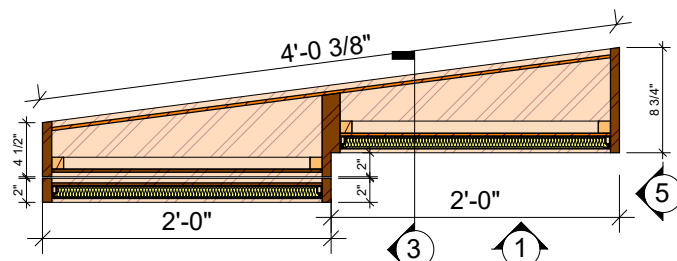
5 SIDE-B

3/4" = 1'-0"

VAP-1 VARIABLE ACOUSTIC PANEL

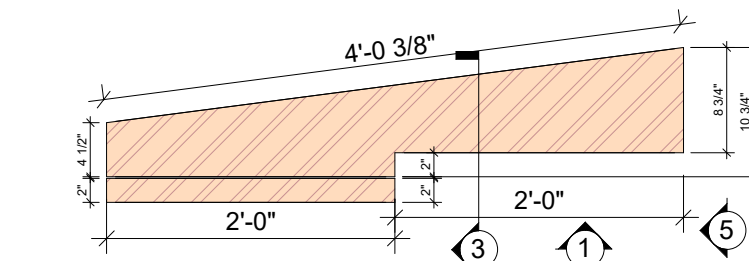


Frequency (Hz)	Absorption Coefficient NRC=1.00 (2')	Absorption Coefficient NRC=0.15, SAA=0.12
100	0.64	0.18
125	0.58	0.17
160	0.76	0.14
200	0.83	0.14
250	0.99	0.12
315	0.86	0.11
400	0.93	0.09
500	1.13	0.11
630	1.04	0.11
800	1.03	0.10
1000	1.00	0.11
1250	0.94	0.12
1600	0.92	0.13
2000	0.93	0.15
2500	0.91	0.15
3150	0.92	0.16
4000	0.86	0.14
5000	0.83	0.14



2 SECTION-A

3/4" = 1'-0"



4 SIDE-A

3/4" = 1'-0"



1 in