



# Malvicino Design Group

Architectural Acoustics Noise & Vibration Control  
 System Integration & Installation  
 57 West 57th Street, 4th Floor  
 New York, NY 10019  
 www.malvicinodg.com  
 Tel: +1 (646) 416-7940  
 347.455.08.62  
 info@malvicinodg.com

PROJECT: **ACOUSTIC PRODUCT LINE** by MALVICINO DESIGN GROUP

TECHNICAL SCHEMATICS

DESCRIPTION: **SDP-1 SOUND DEFLECTOR PANEL**

NOTES & COMMENTS:

SCHEMATIC TITLE: **SDP-1 SOUND DEFLECTOR PANEL**

SCALE: 1" = 1'-0"  
 DATE (D/M/Y): 02/14/24  
 DRAWN BY: J.E.N.Q.  
 CHECK BY: J.E.M.  
 APPROVED BY: H.A.M.

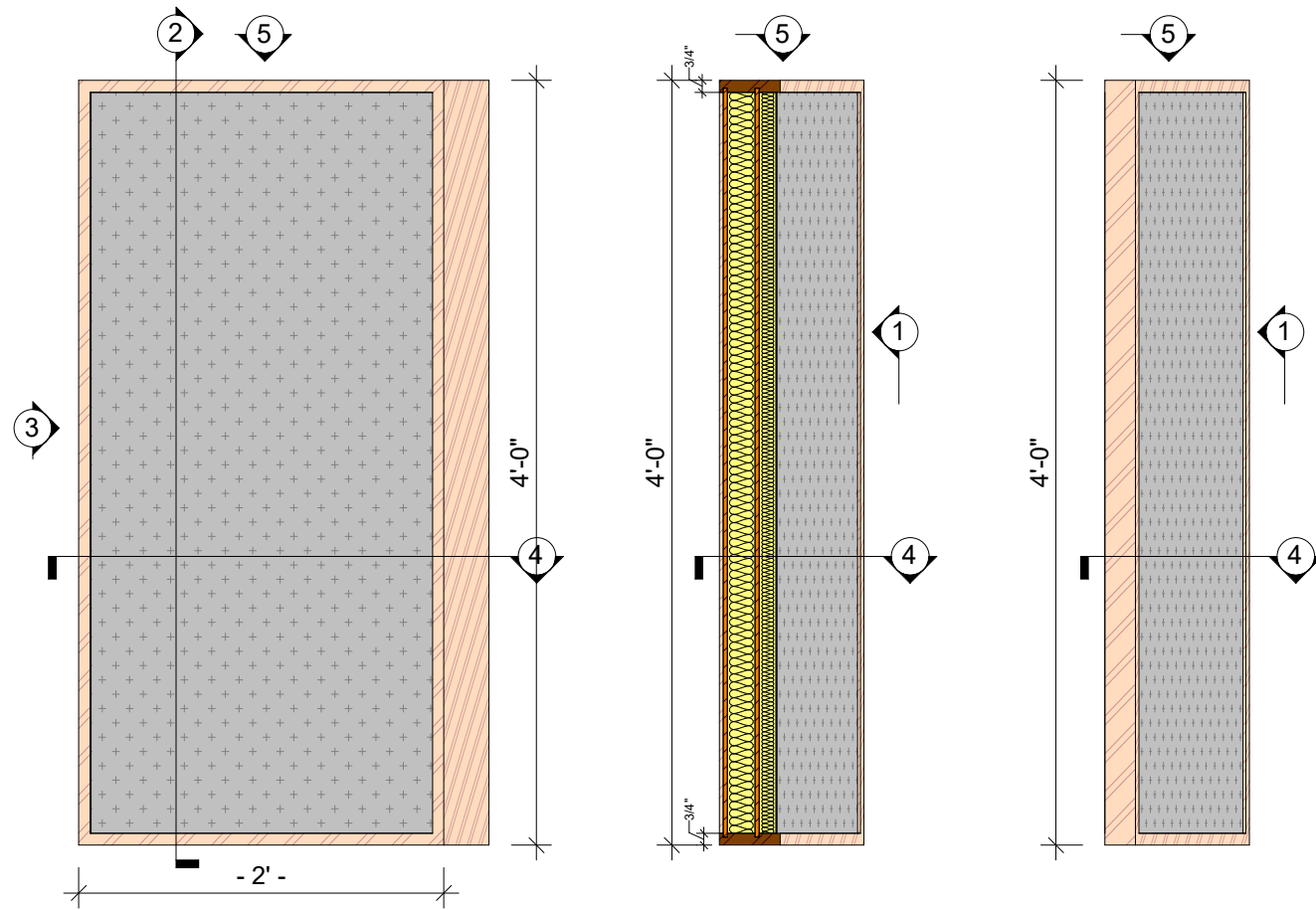
PLAN No. **A-00.02**

## SDP-1 SOUND DEFLECTOR PANEL

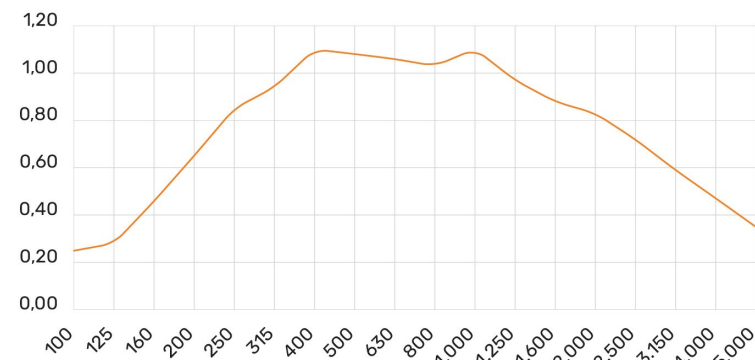
The SDP-1 Panel uniquely combines advanced acoustic technology and superior performance. It features a binary pattern of perforations on a rigid template paired with a sound-absorbent substrate, achieving excellent sound absorption across NRC frequency bands while preserving the space's "air" by tapering off absorption at 1000Hz. This panel consistently absorbs sound in the 1000-4000Hz range, maintaining a balanced Noise Reduction Coefficient (NRC) greater than 0.90.

This innovative technology prevents excessive high-frequency absorption, transitions to a scattering surface at very high frequencies, and significantly enhances mid and low-frequency absorption. Installation is simple and quick using our custom-made cleats system, allowing it to be easily mounted on any wall surface. The SDP-1 Panel provides a cost-effective, broad bandwidth, and highly efficient solution for reverberation control.

It is available in dimensions of 2'0" (width) x 4'0" (length) x 2" (thickness). Choose from industry-standard or custom fabrics to meet your specific requirements. *All components are Class A Fire Rated, ensuring safety and compliance.*



## SDP-1 SOUND DEFLECTOR PANEL



Frequency (Hz)	Absorption Coefficient NRC=1.00
100	0.25
125	0.28
160	0.46
200	0.65
250	0.85
315	0.94
400	1.10
500	1.08
630	1.06
800	1.03
1,000	1.10
1,250	0.97
1,600	0.88
2,000	0.83
2,500	0.72
3,150	0.59
4,000	0.47
5,000	0.35